

Bathroom Panel

Fabrication & Installation Manual



Bathroom Panels

To complement and enhance the Minerelle bathroom worktop range, we have added 6mm solid surface sheets to be used for bathroom design solutions. Minerelle bathroom panels are used for shower panels and bathroom wall cladding. To complete a colour co-ordinated scheme, Minerelle (12mm thickness) can be used as a bath panel and window sills are also available to match.

The panels are offered in two sheet sizes, 2440mm x 1220mm, 2440mm x 900mm with three types of jointing beads, also 2440mm long. Skirting is also available 4100mm x 100 or 150mm height.

The benefits of Minerelle bathroom panelling are...

- Totally waterproof - non-porous, cast solid surface sheet
- Hygienic - wipe clean surface, grout-free panels
- Ease of installation – directly onto plaster, tiles etc.
- Maintenance free - no grout to discolour or mould
- Inhibits condensation - insulates the walls
- Repairable - in case of repositioning electric shower or other bathroom accessories

As a waterproof product, Minerelle 6mm cast sheets do not require additional support and are easily fixed to almost every surface. The panels can be fitted directly onto brick, block, plaster and even tiled walls providing the surface is sound, dry and free from dust and grease, and a SUITABLE adhesive is used. However, depending on the type and condition of the existing wall finish, you may choose different fixing methods. (see later, Alternative methods of fixing).

Consider how well the old plaster or old tiles that you are bonding to are stuck to the wall? If in doubt, do not stick panels directly on top of them, and use an alternative method of application.

Site condition and preparation

Minerelle bathroom panels should be laid flat indoors. Before installation, all Minerelle bathroom panel products should be brought to room temperature of min.17°C (62°F).

Panel products and jointing strips will become more brittle in cold temperatures so handle with care. Ambient temperatures below 17°C will also prolong the drying time of the adhesive.

- Ensure that all walls are flat and even, i.e. free from excessive hollows or protruding bumps.
- Painted or tiled surfaces should be suitably 'keyed' before applying adhesive.
- Use a moisture cure, solvent-free adhesive or silicone sealant only when fixing to tiling. Always refer to adhesive manufacturers recommendations regarding the use of their adhesives with different materials and applications.
- Carefully consider the bathroom layout. Take into consideration the pipe runs for hot and cold water supply, wastes and electrical requirements relative to panel placement. (Please refer to installation sequence, later in this section).
- All new pipe work should be pre-installed, leaving stub pipes at the positions where the equipment will be fitted.
- We recommend that before each panel is bonded in place they are dry fitted to make sure that they have been correctly measured for size and fit.
- Determine that all holes and cut-outs have been located correctly and machined to the correct dimensions i.e. 2mm oversize to allow for expansion and contraction. (If cut-outs are left for on-site machining, check that pipes, shower valves, sanitary ware fittings and anything else that determines size of cut-out is on site).
- Check visual colour match between panels and components.
- Check you have enough adhesive to complete the job.
- Check number of corner and mid-panel jointing beads required

UNDER NO CIRCUMSTANCES MUST INTERNAL CORNER CUT-OUTS BE FINISHED WITH SQUARE CORNERS. ALWAYS MACHINE A RADIUS TO THESE CORNERS AND MAKE THAT RADIUS AS LARGE AS IS PRACTICAL (8mm MINIMUM).

Site and installation considerations

Bathroom panels can be used when lining out full rooms. Care should be taken prior to fitting the panels to ensure that the joints are positioned in such a way as to avoid very thin strips of panels at the ends of the walls, in the corners. We recommend you start installation in a corner and if the bathroom has a bath or shower fitted into a corner, start there and work outward.

The last panel fitted should preferably be the one over the door. Finishing over the door is recommended so that any cutting of the panel width is minimised and aesthetically it is not immediately apparent.

For a complete refurbishment, the best installation order is...

1. Install the bath and/or shower tray
2. Install the panelling
3. Install the basin and toilet



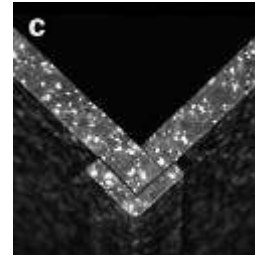
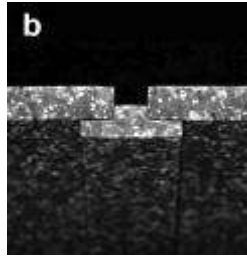
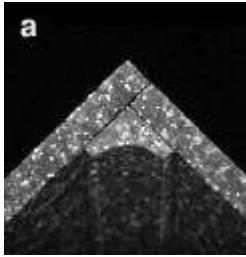
Install the shower tray in accordance with the manufacturer's instructions to ensure it is totally rigid (there needs to be zero movement when you stand in the bath and/or shower). Completely seal the bath/shower tray to the wall(s) so that no water can get down the joint, using silicone sealant. Next, fit the Minerelle wall panelling, and apply a second bead of silicone along the bottom joint between the panelling and the bath and/or shower tray. Continue fitting the panelling around the rest of the walls. Then fit the wash hand basin and toilet.

- Where the shower tray is supplied with an integral up stand detail, this should be, if possible, recessed into the wall and the panelling fitted over it.

- If using wall hung basins or wall hung toilets special procedures have to be followed. Please refer to the sanitary ware manufacturers instructions.
- Do not mount load-bearing accessories, e.g. grab handles, directly on to Minerelle panels. Ensure that any load-bearing item is mounted through the panel, securely fixed into the wall and sealed with silicone.

Installation sequence

- Ensure the wall and the back of the bathroom panels are free from dust, clean and dry. If necessary wipe off with damp cloth and allow to fully dry before proceeding. N.B. It is advisable to finish off exposed edges before fixing the panels to the walls. (Use a 320grit abrasive paper on a sanding block, followed by Scotch-Brite pad and finish with Minerelle Finishing Spray).
- Apply 6mm bead of adhesive as evenly as possible to the panel 12mm from edge of the panel and at 300mm intervals horizontally or vertically across the reverse side. If necessary, use an adhesive spreading trowel to ensure even thickness of the bead.
- Press panel firmly into place and apply even pressure across the whole panel to achieve a flat surface. Uneven pressure may result in wavy appearance of the panel. We recommend the use of a solid straight-edge (4" x 2" timber or similar) to gently press or tap the panel into place until correctly aligned. This is conventional panelling and dry-wall fixing practice.
- For internal corner panels, leave a gap of 2mm between the wall and the edge of the panel to allow for expansion. Similarly, leave a 2mm gap for the adjoining panel. To finish a 90° angle installation, insert a Minerelle "corner" jointing bead (see photo a below). Use one small bead of clear silicon directly in the corner of the panels to seal the joint and to adhere the Minerelle corner bead. Hold in place if necessary using masking tape or similar.
- When panelling the whole of the bathroom, a mid-panel 'T' jointing bead (see photo b) should be used in between panels. Leave a 7mm gap between the two panels, apply a bead of clear silicon and insert the 'mid-panel' jointing bead.



- For external corner joints (see photo c), it will be easier to mark up the panels so that the edge of one panel overlaps at the end of the wall's external corner and extends beyond it, to run parallel with - but not beyond - the face of the other panel. Once in place, the external corner beading will finish the exposed panel edges and hide any minor dimensional discrepancies.
- Remove any excess silicon which may have been squeezed out onto the surface of the panels during the application of the beading process.
- When fixing bathroom accessories to the face of the Minerelle panels you must allow for expansion and contraction by drilling the hole 2mm larger than the diameter of the screw shank
- To finish, simply wipe the surface with damp cloth until all the dust is removed, then apply Minerelle Finishing Spray and wipe again with a clean cloth. Finally, buff the surface with a clean dry cloth.

Panel Adhesives

Panel adhesive is quite thick and can be used to pack out the panels if the walls are slightly uneven. There is no need to cover the entire reverse face of the panel, regularly spaced (300mm) beads of adhesive are sufficient to hold each panel in place.

Use our recommended UV panel adhesive. This product is supplied in standard tubes using standard dispensing gun and is available through your distributor. Alternatively "Contact us" via our website www.minerelle.com

Always refer to adhesive manufacturers recommendations regarding the use of their adhesives with different materials and applications.

Alternative fixing methods

Fixing to a 'lined' wall: Where old, uneven walls are being 'lined', make sure the battens are flat and level, packing out where necessary so that the lining panels (ply, MDF or plasterboard) do not develop curvature following the wall contours. Battens should be spaced horizontally at approx. 30 - 40 centimetre intervals. Vertical battens should be inserted at the end of wall runs or around cut-outs e.g. doors, windows. Minerelle panelling is then fixed to the lining panels in the normal way.

Panelling over existing tiles: When fixing the panels over existing tiling, we would recommend the following procedure...

- Ensure that the existing tiles are securely fixed to the wall.
- Check that the extra thickness of panelling does not interfere with the operation of existing features such as taps, shower mixer valves, doors and architraves.
- Always 'key' the surface of the tiles. Either score the glazed surface with a hand-held tile cutter or similar tool that will scratch their surface, or, coat the surface of the tiles with a suitable bonding agent e.g. ThistleBond-it or Knauf-Betokontakt that contain a fine aggregate.
- The wall must be free of grease and dust. This is best done by brushing clean then washing with a solution of sugar soap. Allow the walls to dry thoroughly before proceeding.
- Some older bathrooms are half tiled with ceramic tiles that have been applied using cement. These are very difficult to remove so 'batten out' the area above the tiles to the same level and the panelling can be stuck over both tiles and battens.

Surface finish

Minerelle bathroom panels are factory finished to 400 grit which provides a satin finish.

The surface can be refined using our recommended solution, Minerelle Finishing Spray. This is applied

to the entire panel, left for a few minutes and then rubbed in using a clean dry cotton cloth, then buffed off completely by using a fresh dry cotton cloth.

Product repair

Surface damage and deep scratches can be repaired using the Minerelle repair kit which is made to order upon request. The shelf-life of a repair kit is 3 weeks from fill date; this will reduce in warmer conditions. The repair kit is a 2 part product - the repair compound and the catalyst.

Contents of Repair Kit

• 1 tin of resin, 1 packet of colour matched granules (powder), 1 pair of Latex gloves, 1 bottle of catalyst, 2 paper cups, 2 mixing sticks and 1 bottle of 200ml Imanol (cleaning solution)

PLEASE NOTE: Temperature should be at least 17°C (62°F) to ensure a successful cure and no greater than 26°C (80°F). The colder the environment the longer the curing process will take. Ideally leave overnight before sanding. If possible carry out the repair in a warm area; this will also help the flow of the repair compound.

Steps in repairing

1. Remove the damaged area, by either drilling or routing-out no deeper than the surface. Any loose chippings must be removed from the damaged area.
2. To allow the repair compound to adhere properly, router around the damaged area creating clean, chip-free edges. Continue to take away the material within this area to a depth of 2 – 3mm.
3. Clean in and around the area with Imanol. Do not use nail varnish remover or similar which may contain mineral oil.
4. Thoroughly mix the contents of the resin and powder in the original resin tin so that the particles are mixed and suspended within the resin and make a homogeneous compound
5. Pour the mixed repair compound, from the original tin into the paper cup and up to the 'fill line'. Add 7 drops of the catalyst and mix the two together.
6. Pour the mixed repair solution into the prepared area. If you are repairing a vertical section then this can be achieved by building up a 'dam' or 'cup' around the damaged area with masking tape.
7. With the wooden spatula, gently tap into the solution to release any trapped air bubbles that may later cause problems when sanding. The solution should now be air-free and slightly overlapping and proud of the prepared area.
8. Always leave 24 hours to ensure repair solution is fully cured. Depending on the temperature of the environment curing time may vary.
9. When cured, carefully remove the ridge of hardened repair solution using a random orbital sander with a 180 grit abrasive pad until a smooth, level finish is achieved. Wipe off the dust with a damp cloth and repeat the process using 240 and 320 sanding discs. The Minerelle surface is now repaired and ready for you to complete the finishing process.

Care and Maintenance

General care in preserving the beauty and functionality of Minerelle is as simple as wiping with a warm damp cloth. Please read through these simple instructions in order to look after your Minerelle product. Everything you need to care for your Minerelle worktop is included in the Care & maintenance kit available from your distributor.

Contents of Care & Maintenance Kit

• 1 extra-absorbent Micro cloth (blue) • 1 bottle of Minerelle Finishing Spray (500ml)
• 1 extra-absorbent Micro cloth (pink) • 1 Care & Maintenance instruction booklet
• 1 Scotch-Brite sponge

Instructions

Dulling due to general wear and tear can be avoided by cleaning once a week with Minerelle Finishing Spray. We recommend the daily use of Minerelle Finishing Spray for the first seven days after installation. If soap is used for removing stains in dark colours it may be necessary to re-apply Minerelle Finishing Spray for restoring the original lustre.

Product warranty

If installed in accordance with our Fabrication and installation instruction, you can have peace of mind in that Minerelle is provided with a manufacturer's warranty for up to 10 years. Please "Contact us" on www.minerelle.com for full details of the warranty.



For re-ordering individual care and maintenance items such as Minerelle Finishing Spray or Grey 3M Scotch-Brite sponge please contact your supplier.

Items may be purchased directly by using the "contact us page on www.minerelle.com
For general information on Minerelle please contact your retailer or visit our web site at www.minerelle.co.uk

© Copyright 2010 Resacccs Limited.
Minerelle is a registered trademark of Resacccs Limited.
Scotch-Brite® is a registered trademark of 3M.
Minerelle Finishing Spray® is a registered trademark of Resacccs Limited.

Minerelle is manufactured in the UK by Resacccs Limited.

Metnor Business Park, Hadrian Road, Wallsend, Tyne & Wear, NE28 6HH, UK.

Co Reg: SC365963 VAT: GB982 958 748

info@resacccs.com www.minerelle.com